

APPENDIX TO

A STATE-OF-THE-ART ANALYSIS SYSTEM DESIGNED TO MONITOR MICROSEISMICITY AT A LOCAL SCALE

Andrea Morelli¹, Mario Anselmi², Thomas Braun³, Stefania Danesi¹,
Maddalena Errico¹, Daniela Famiani³, Alexander Garcia¹, Irene Molinari¹,
Maurizio Vassallo³, Lucia Zaccarelli¹, Giampaolo Zerbinato¹

¹ Istituto Nazionale di Geofisica e Vulcanologia, Sezione di Bologna, Bologna, Italy

² Istituto Nazionale di Geofisica e Vulcanologia, Osservatorio Nazionale Terremoti, Roma,
Italy

³ Istituto Nazionale di Geofisica e Vulcanologia, Sezione Roma 1, Roma, Italy

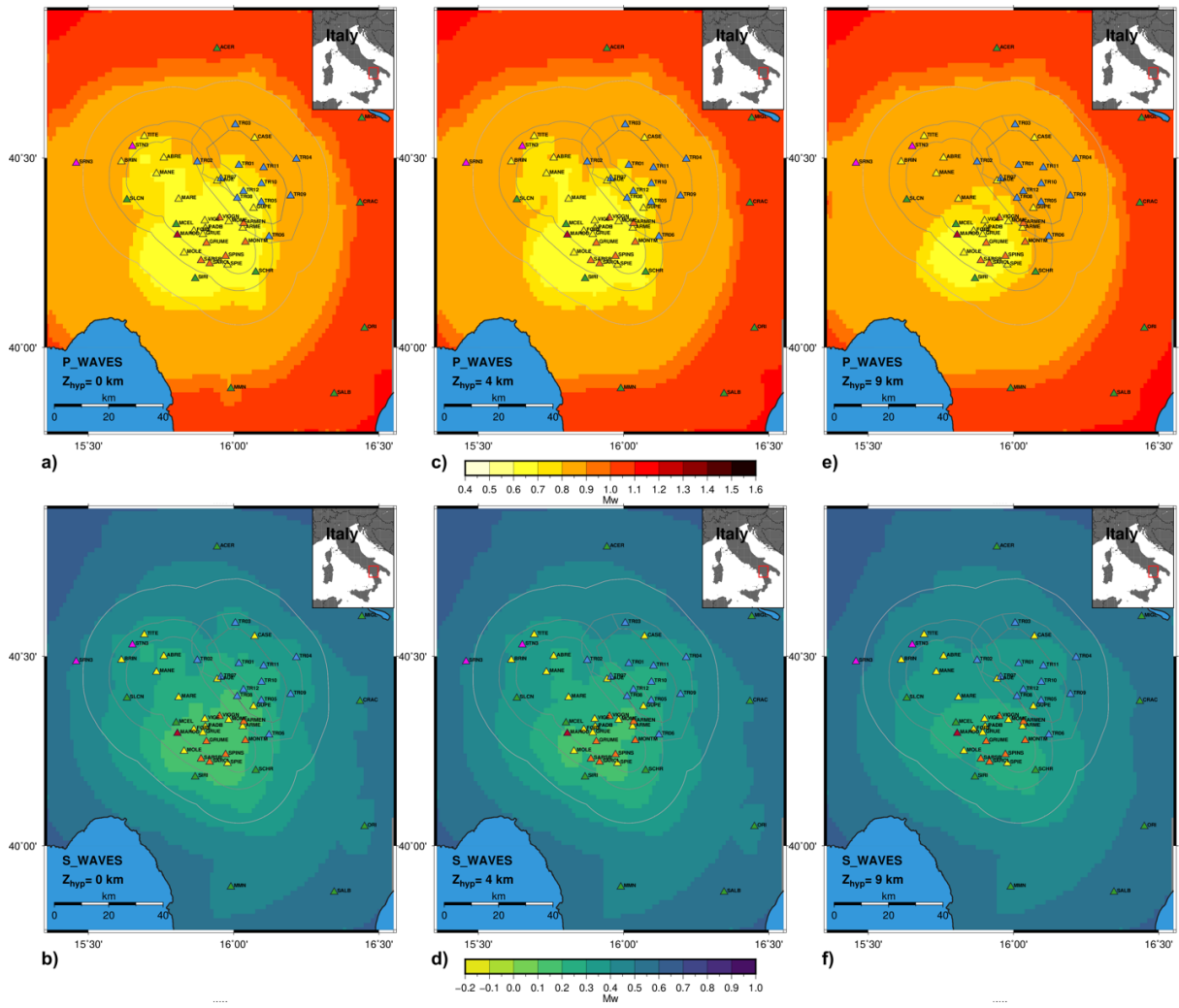


Figure S1. Variability of the detection threshold for P and S waves as a function of the hypocentral depth. The wave type and the related hypocentral depth are shown at the bottom left of each map.

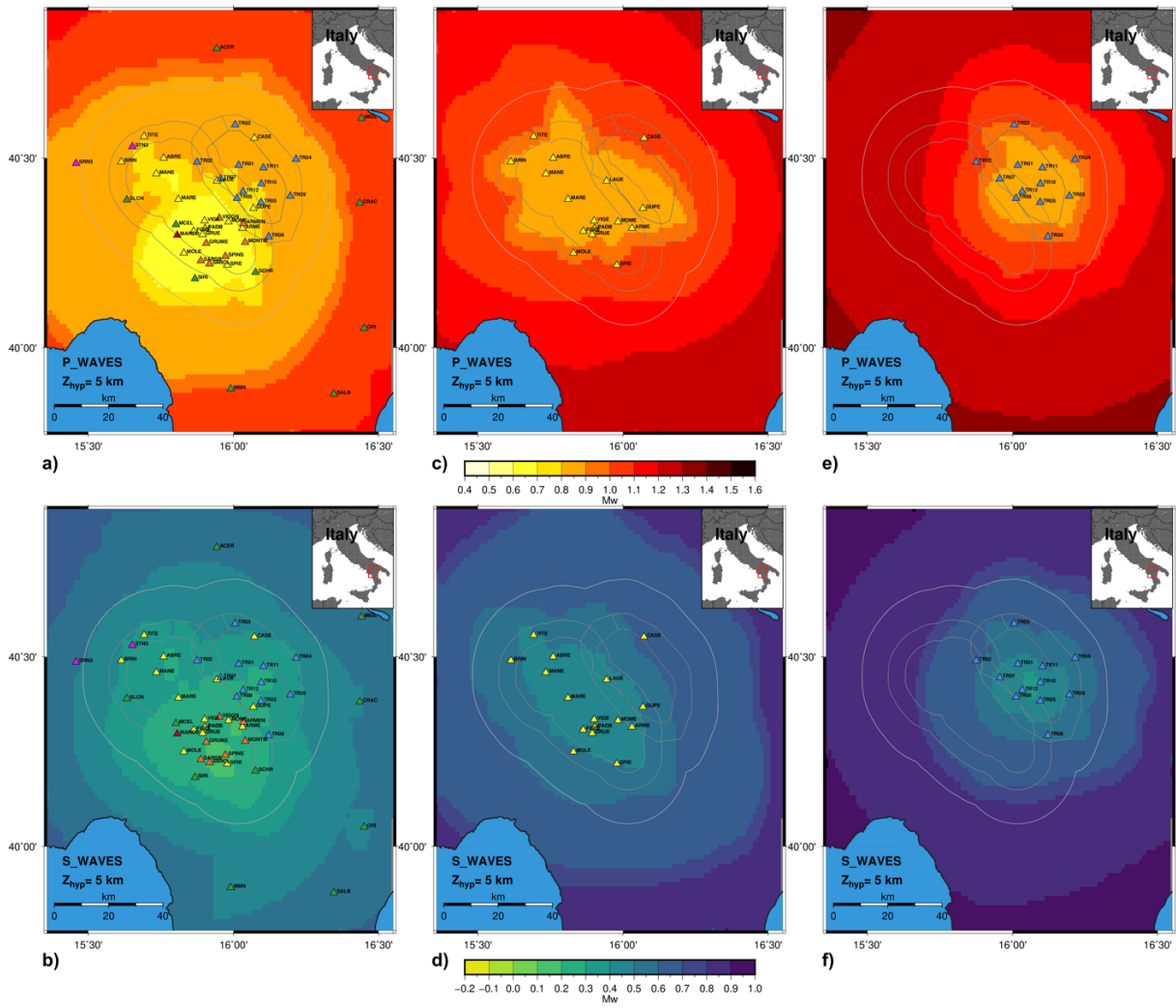


Figure S2. Comparison between the detection thresholds for P and S waves obtained by integrating all the stations present in the monitored area (figures above) and the thresholds obtained by considering only the stations of the VA network (in the center) and only the stations of the TP network (bottom row).