

SUPPLEMENTAL MATERIAL FOR

THE ANTICS LARGE-N SEISMIC DEPLOYMENT IN ALBANIA

Hans Agurto-Detzel¹, Andreas Rietbrock¹, Frederik Tilmann^{2,3},
Edmond Dushi⁴, Michael Frietsch¹, Ben Heit², Sofia-Katerina Kufner^{1,5},
Mike Lindner^{6,7}, Besian Rama⁴, Bernd Schurr², Xiaohui Yuan²

¹ Karlsruhe Institute of Technology, Geophysical Institute, Germany

² GFZ Helmholtz Centre for Geosciences, Potsdam, Germany

³ Freie Universität Berlin, Germany

⁴ Polytechnic University of Tirana, Institute of Geosciences, Tirana, Albania

⁵ Friedrich-Alexander University Erlangen-Nürnberg, GeoZentrum Nordbayern, Germany

⁶ DESY, Hamburg, Germany

⁷ Deutsches Zentrum für Astrophysik, Görlitz, Germany

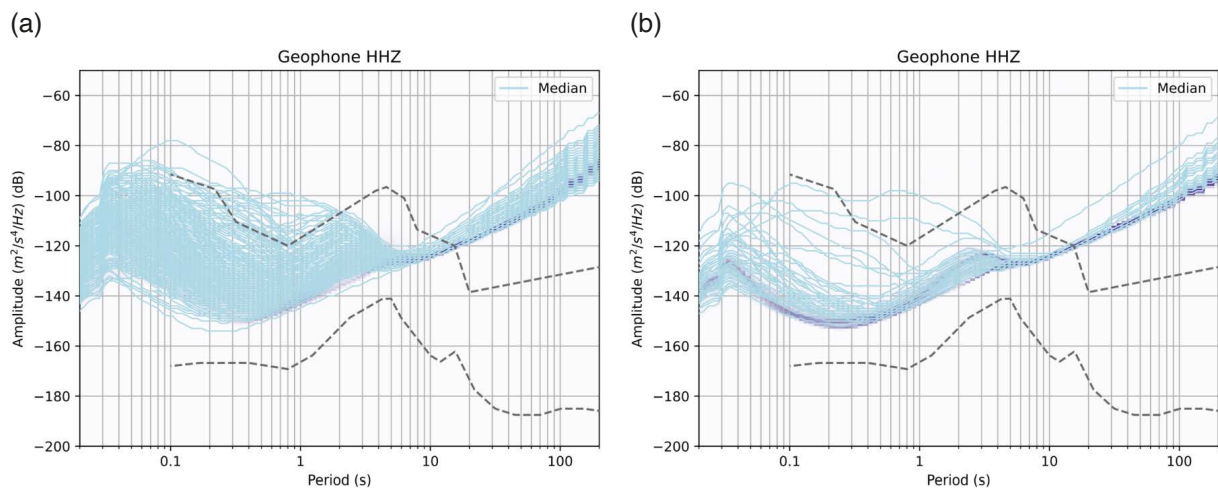


Figure S1. PPSD curves of vertical acceleration noise median for geophones installed inside properties (a) and outside properties (b). First phase September 2022 to May 2023.

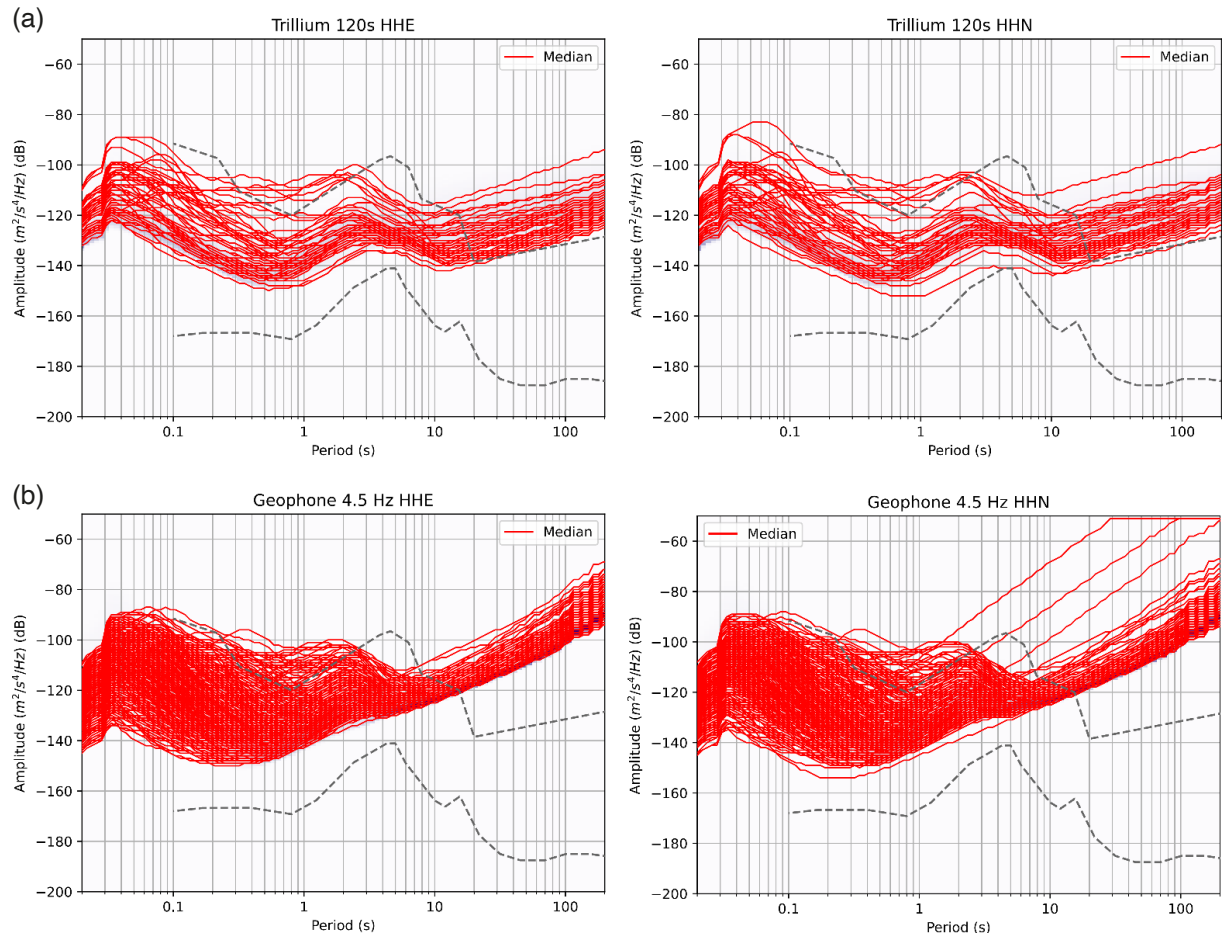


Figure S2. PSD curves of vertical acceleration noise median for horizontal components of broadband (a) and short-period (b). First phase September 2022 to May 2023.

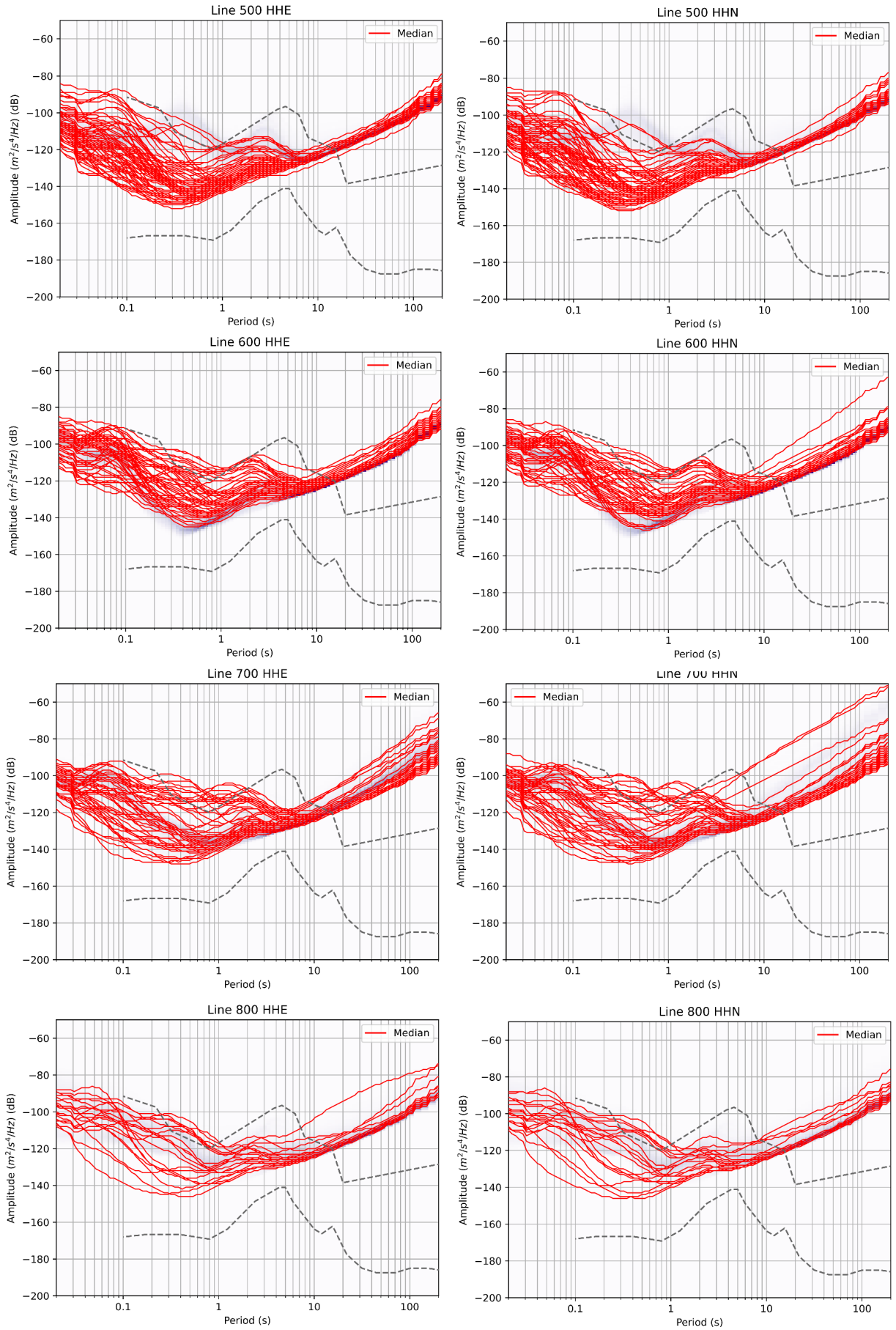


Figure S3. PPSD curves of vertical acceleration noise median for horizontal components of short-period stations installed during the second phase for receiver function median lines. Second phase May 2023 to April 2024.

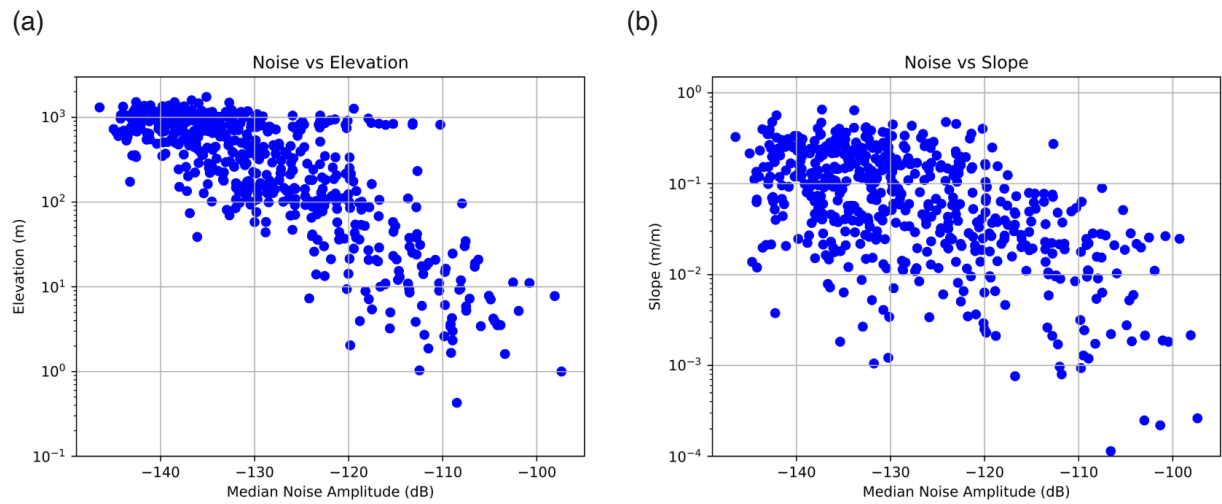


Figure S4. Scatter plots of median noise amplitude versus elevation (a) and terrain slope (b) for each site. The slope was calculated as the maximum absolute value in the SW-NE direction. Relief model 1 arc-second from NASA JPL (2013).

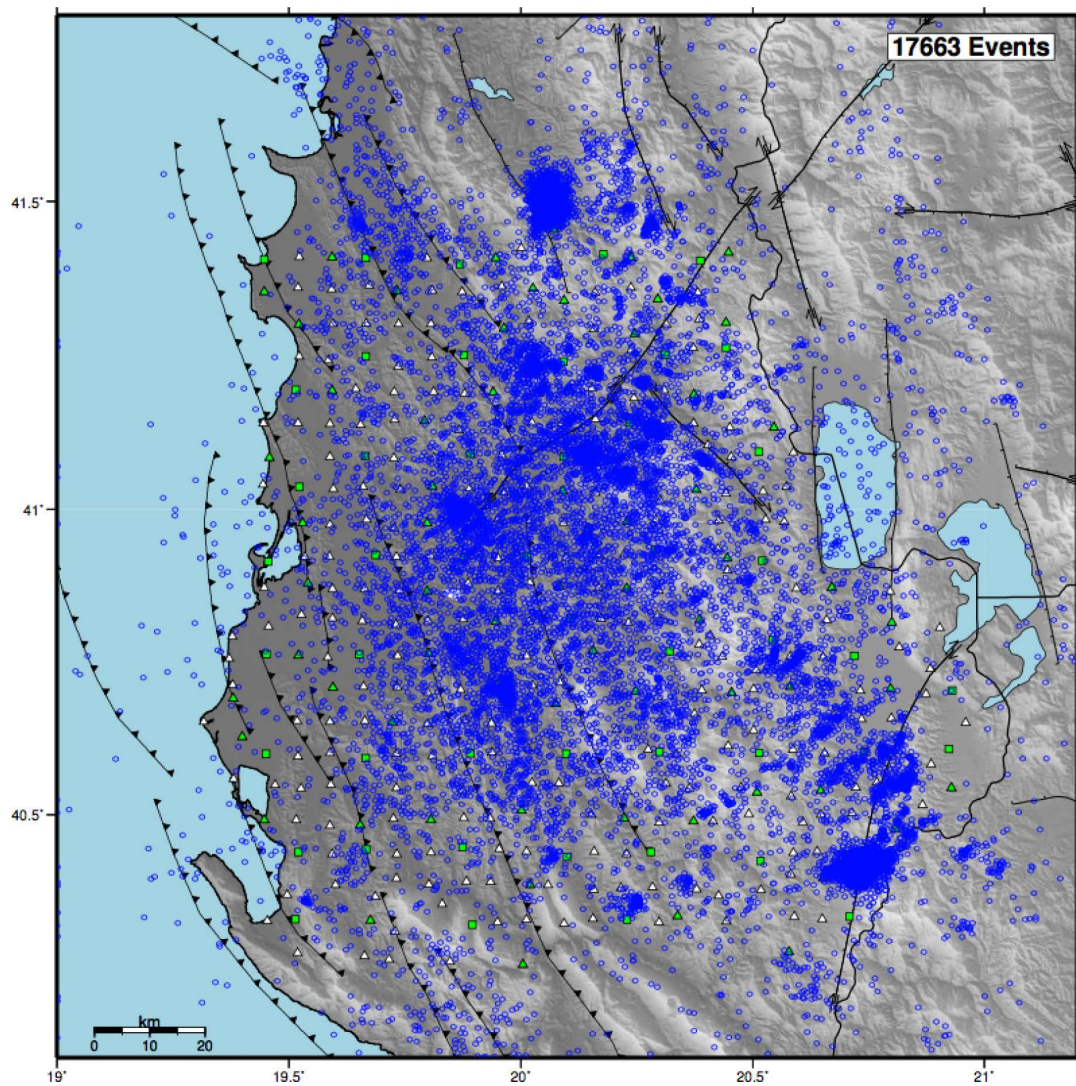


Figure S5. Unfiltered complete catalogue with all ~18k events detected. For the present catalogue, only stations in green were used for seismicity detection.

The Large-N ANTICS Deployment

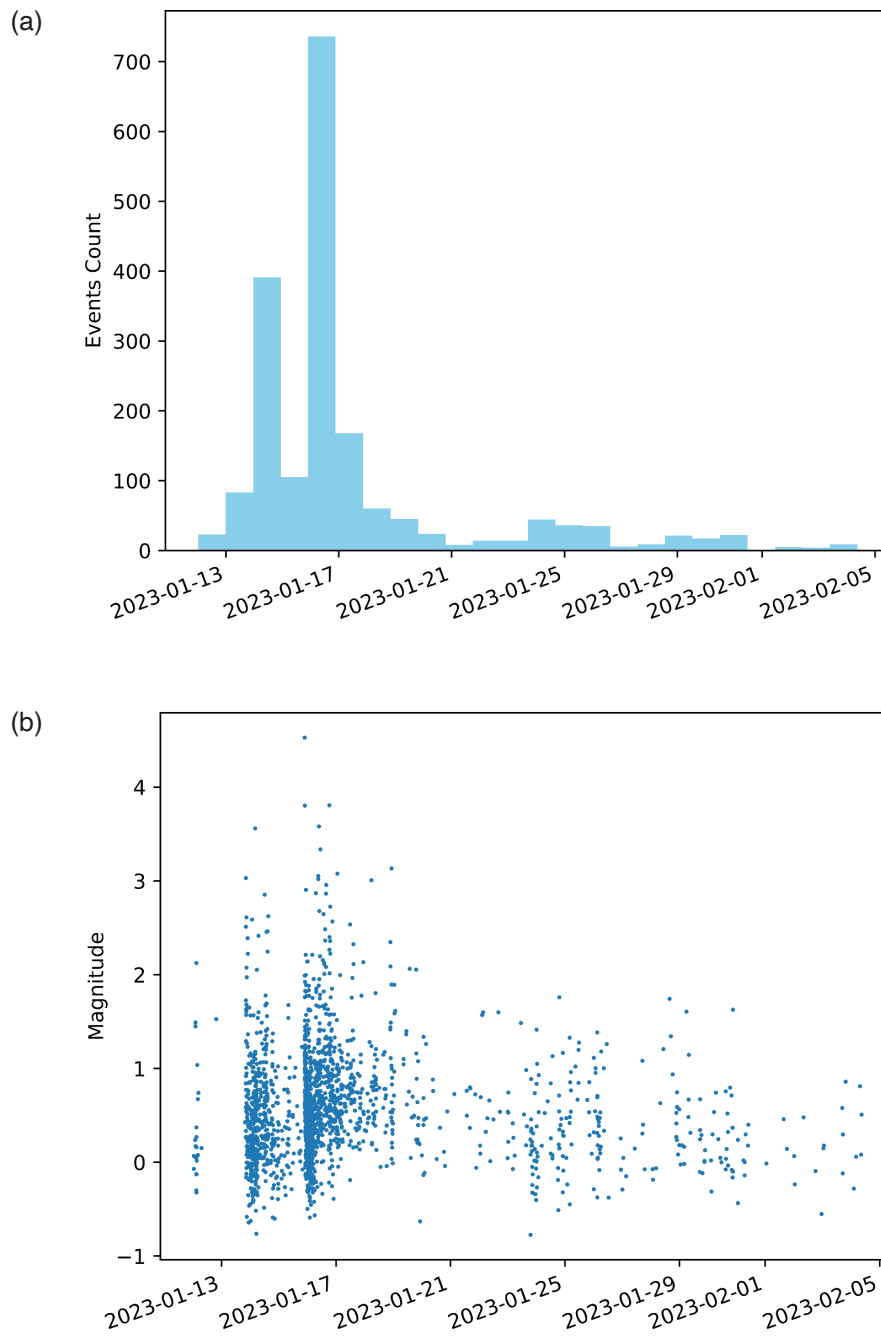


Figure S6. Temporal evolution of earthquakes (a) and magnitudes (b) for the Klos sequence during January 2023.

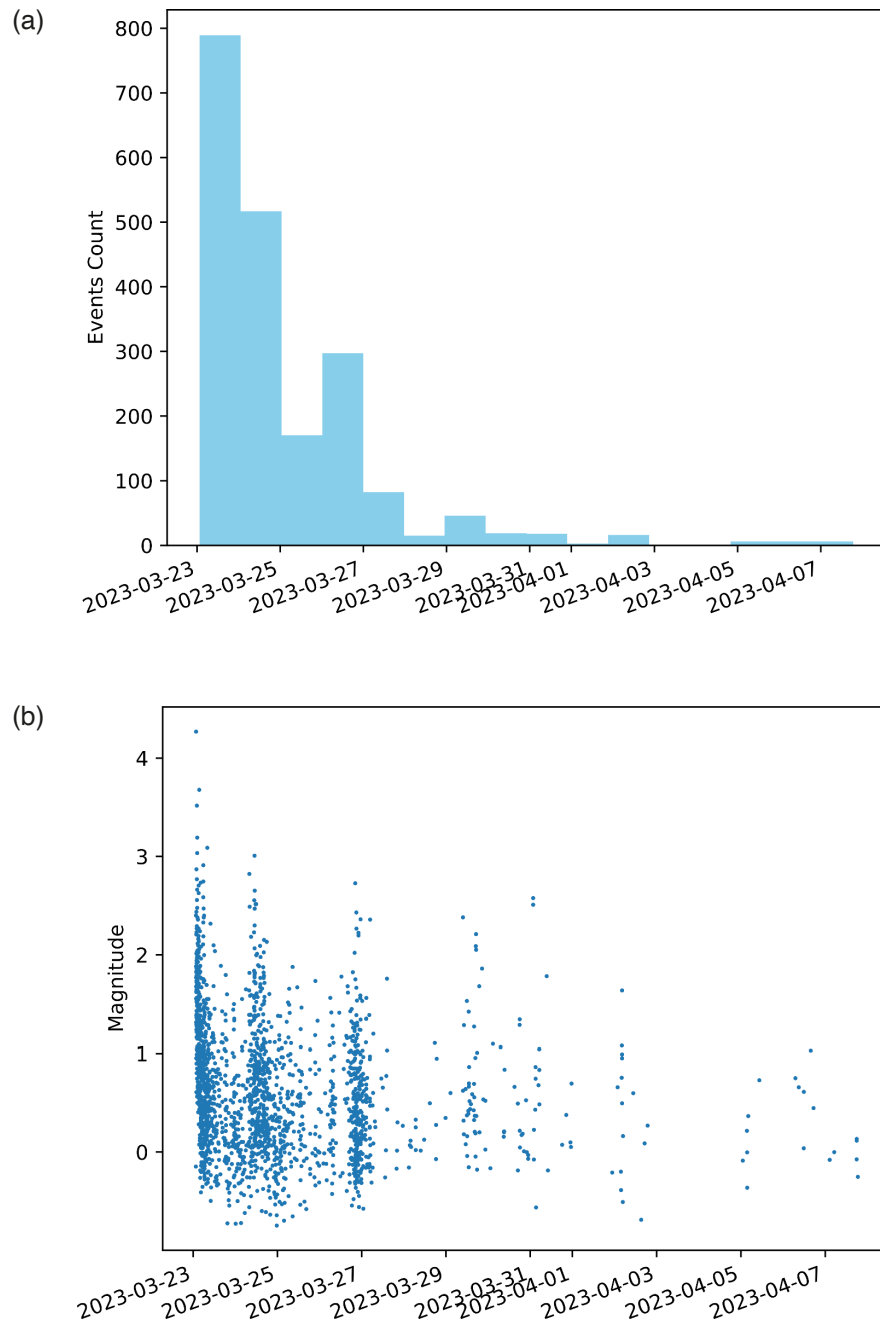


Figure S7. Temporal evolution of earthquakes (a) and magnitudes (b) for the Erseke sequence during March 2023.