

SUPPLEMENTAL MATERIAL FOR

A DENSE SEISMOLOGICAL PROFILE THROUGH THE WESTERN CARPATHIANS – NEW DATA FOR UNDERSTANDING EARTH’S STRUCTURE, GEODYNAMIC EVOLUTION AND SEISMICITY

Tanishka Soni¹, Christian Schiffer², Stanisław Mazur¹,
Mateusz Mikołajczak¹, Jozef Müller^{3,4}, Tomáš Potočný^{5,6},
Jakub Bazarnik⁷, Andreas Hoffmann³, Bálint Süle⁸, Ulrich Wegler³,
Lucia Fojtíková⁹, Jarosław Majka^{2,5}

¹ Institute of Geological Sciences, Polish Academy of Sciences, Krakow, Poland

² Department of Earth Sciences, Uppsala University, Uppsala, Sweden

³ Institute of Geosciences, Friedrich Schiller University Jena, Jena, Germany

⁴ Alfred Wegener Institute for Polar and Marine Research, Bremerhaven, Germany

⁵ Faculty of Geology, Geophysics and Environmental Protection, AGH University of Krakow, Kraków, Poland

⁶ Department of Geology and Paleontology, Faculty of Natural Sciences, Comenius University Bratislava, Bratislava, Slovakia

⁷ Polish Geological Institute – National Research Institute, Carpathian Branch, Kraków, Poland

⁸ HUN-REN Institute of Earth Physics and Space Science, Kövesligethy Radó Seismological Observatory, Budapest, Hungary

⁹ Earth Science Institute, Slovak Academy of Sciences, Bratislava, Slovakia

Supplementary Information

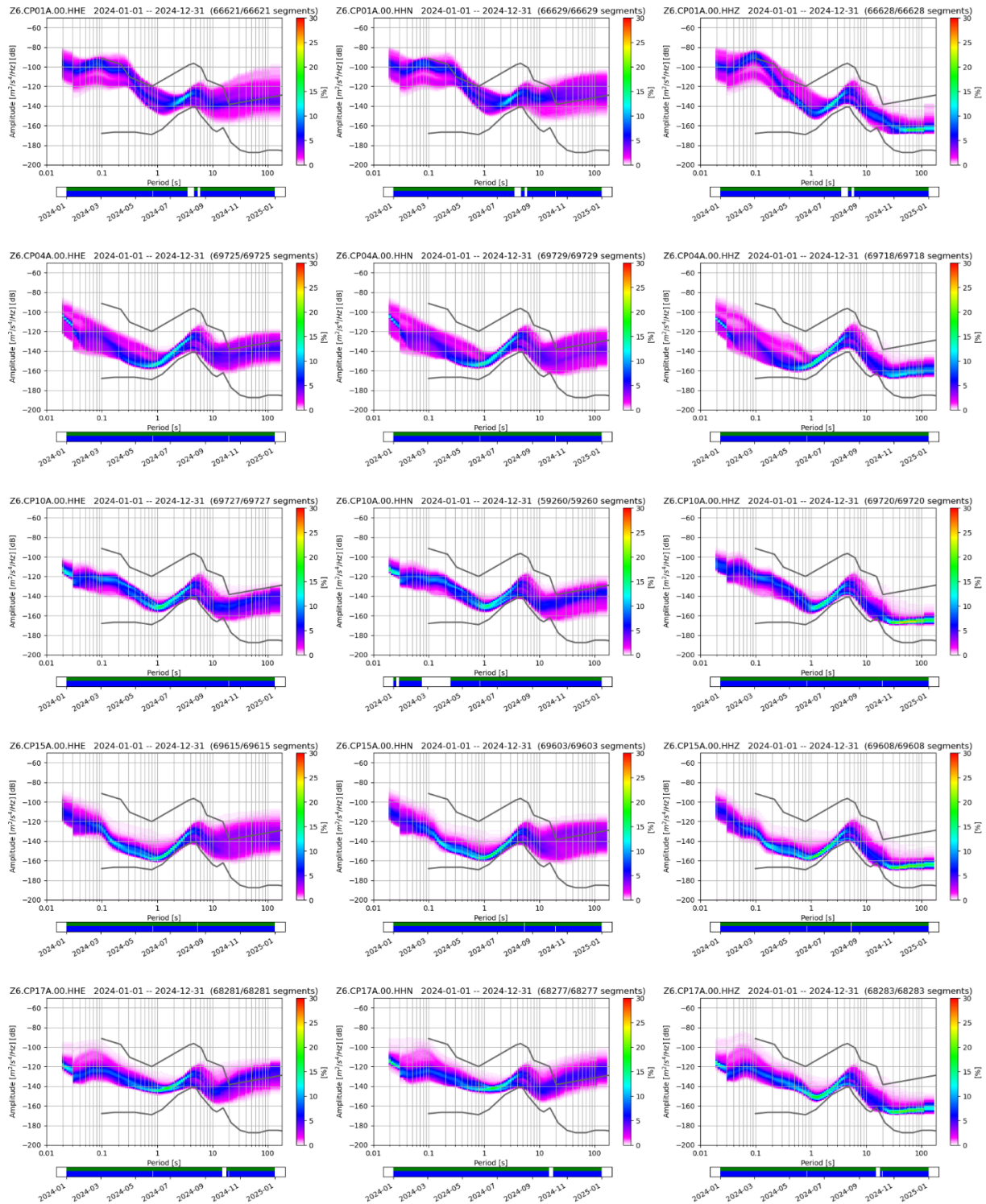


Figure S1. Examples of probabilistic power spectral densities PPSD using the HHE left panel, HHN middle panel and HHZ right panel components of the temporary stations CP01A, CP04A, CP10A, CP15A and CP17A from top to bottom from data of year 2024.

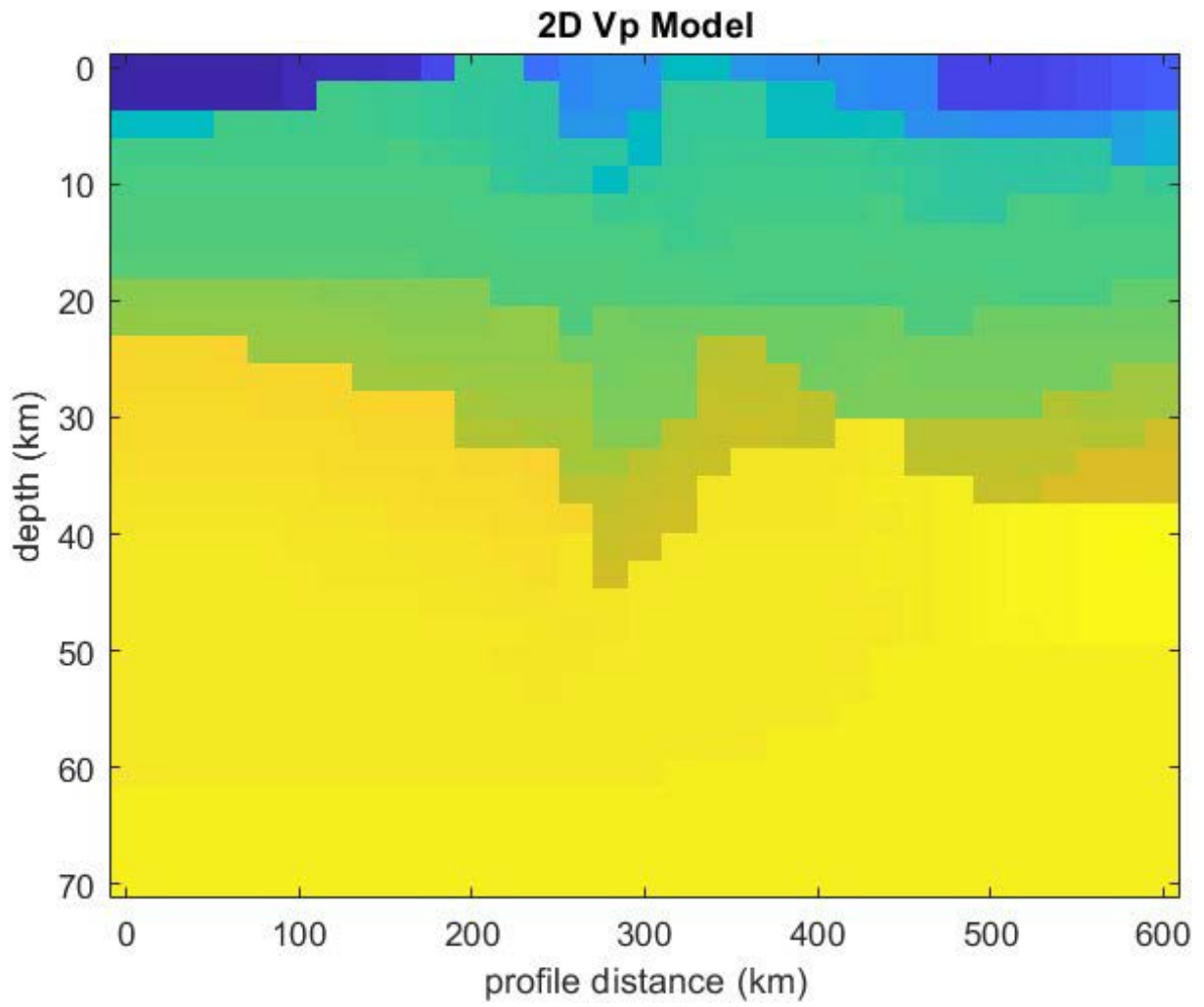


Figure S2. The 2D velocity model used for the CCP migration, based on Środa et al. (2006) resampled at 20 km horizontally and 2.5 km in depth.

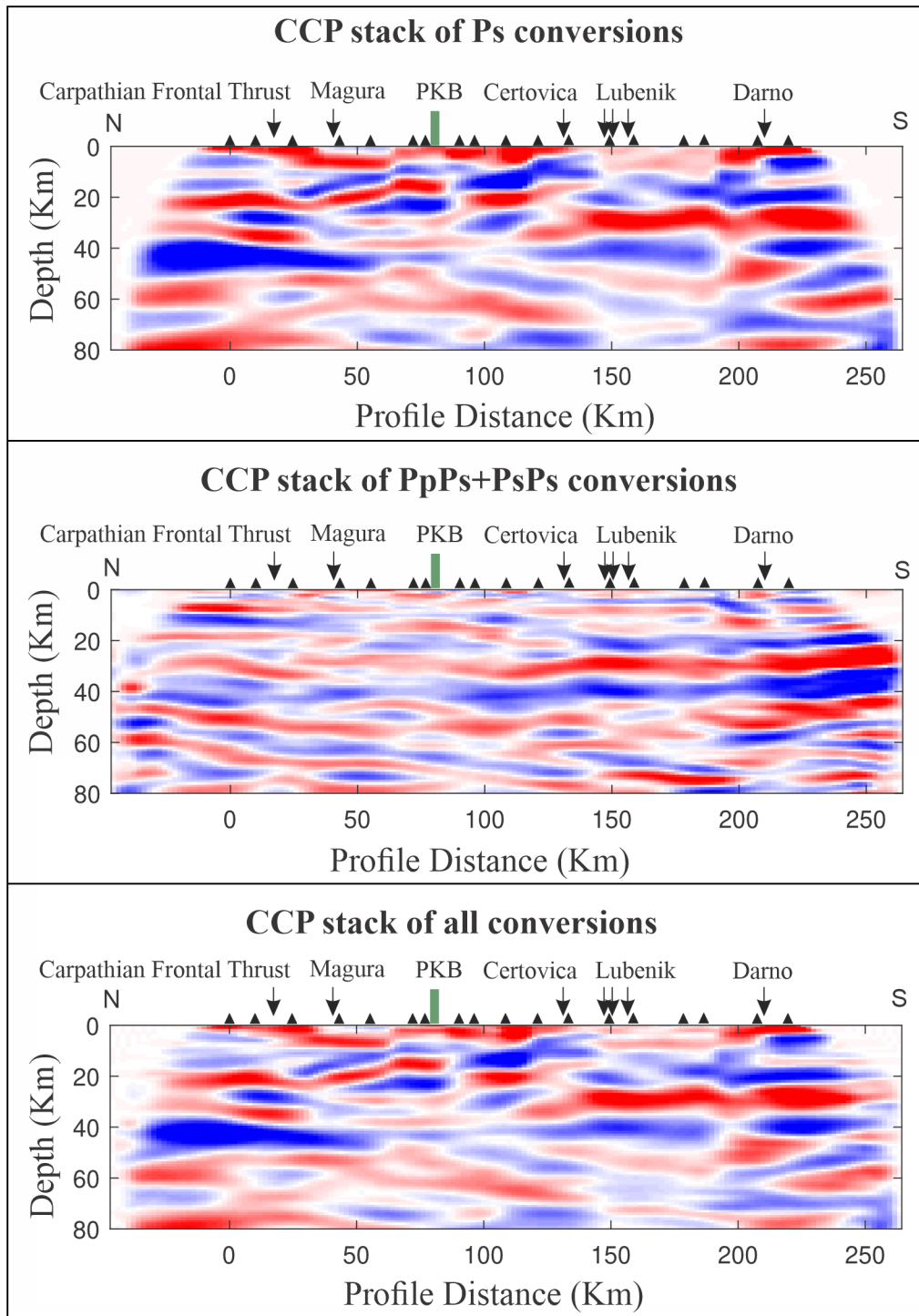


Figure S3. CCP images without interpretation marking.