

APPENDIX TO

DIVENET: A LOCAL SEISMOGRAPHIC NETWORK MONITORING THE LOWER CONTINENTAL CRUST DRILLING ACTIVITIES FOR THE ICDP-DIVE PROJECT

Judith M. Confal¹, Simone Salimbeni¹, Adriano Cavaliere¹,
Stefania Danesi¹, Irene Molinari¹, Maddalena Errico¹, Ludovic Baron²,
Steffen Uhlmann³, György Hetényi², Silvia Pondrelli¹

¹ Istituto Nazionale di Geofisica e Vulcanologia, Bologna, Italy

² University of Lausanne, Institute of Earth Sciences, 1015 Lausanne, Switzerland

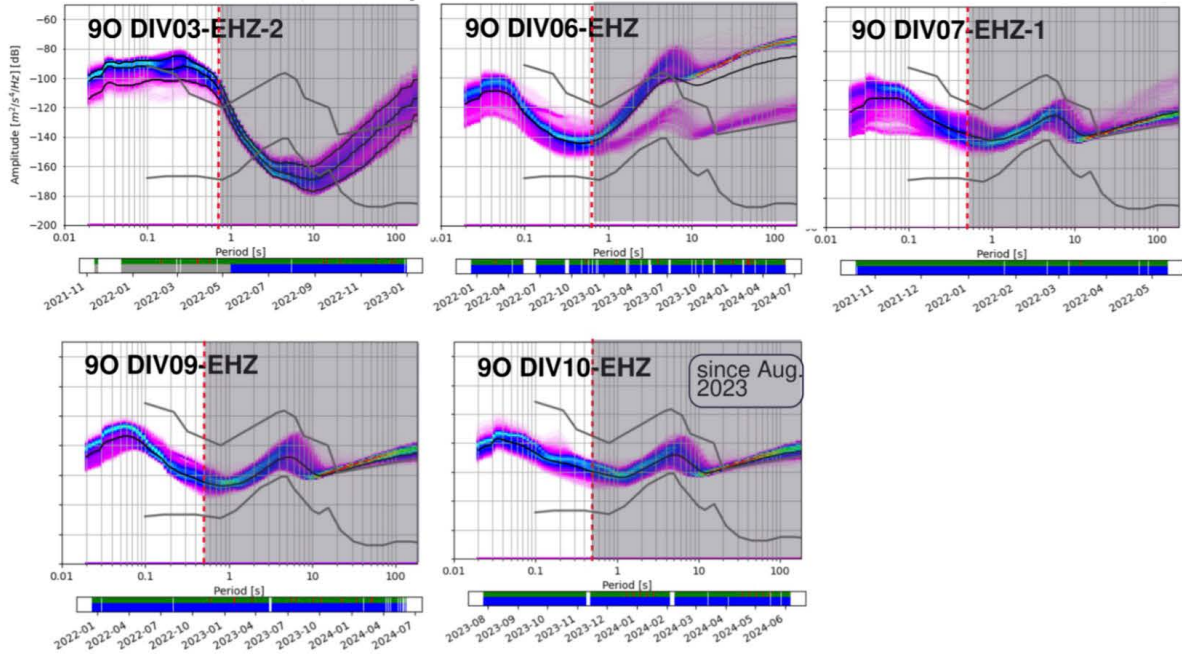
³ IGM GmbH, Untere Sankt Leonhard Strasse 16, Überlingen, Germany

Two figures are included in this supplementary material.

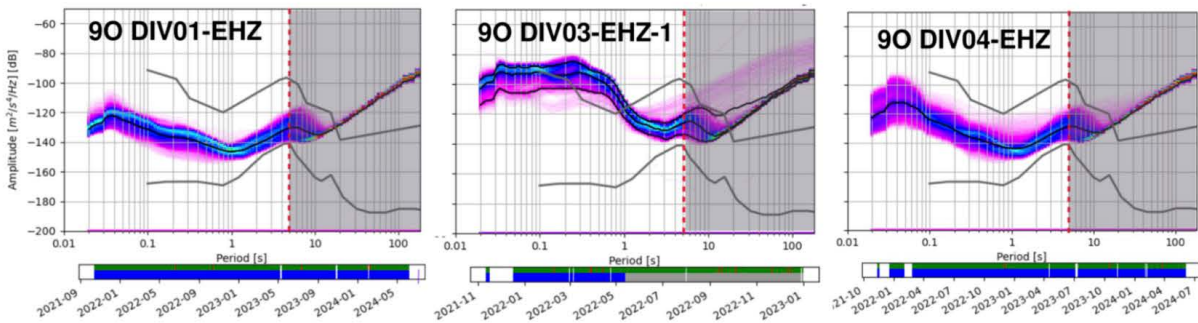
S1 – Probabilistic power spectral density (PPSD) of the short period stations used in this study.

S2 – Two example earthquakes and their manual review with SeisComp

Short period Sara SS20 Sensors 0.5s



Short period Sara SS02 Sensors 5s



Lennhartz 5s

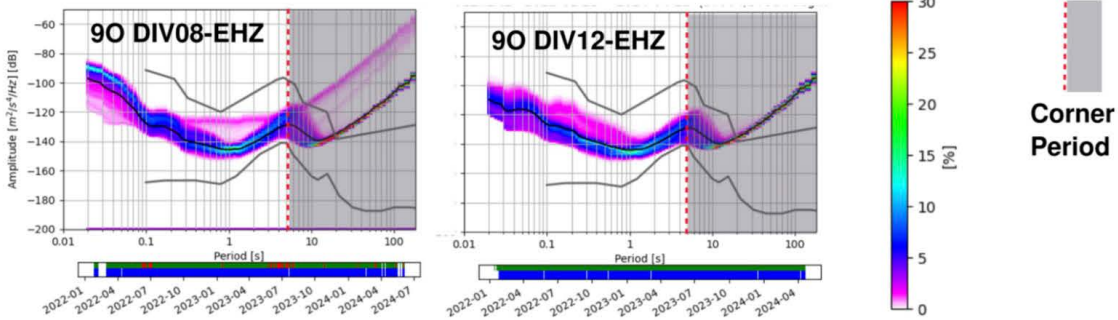


Figure S1. PPSD histograms for the shorter period stations, from the 14th of October 2021 until the 17th of June 2024, sorted according to sensors and frequency ranges. The vertical red dashed lines indicate the long-period corner frequency of the sensors (the portions of the diagram to the right of these lines are meaningless).

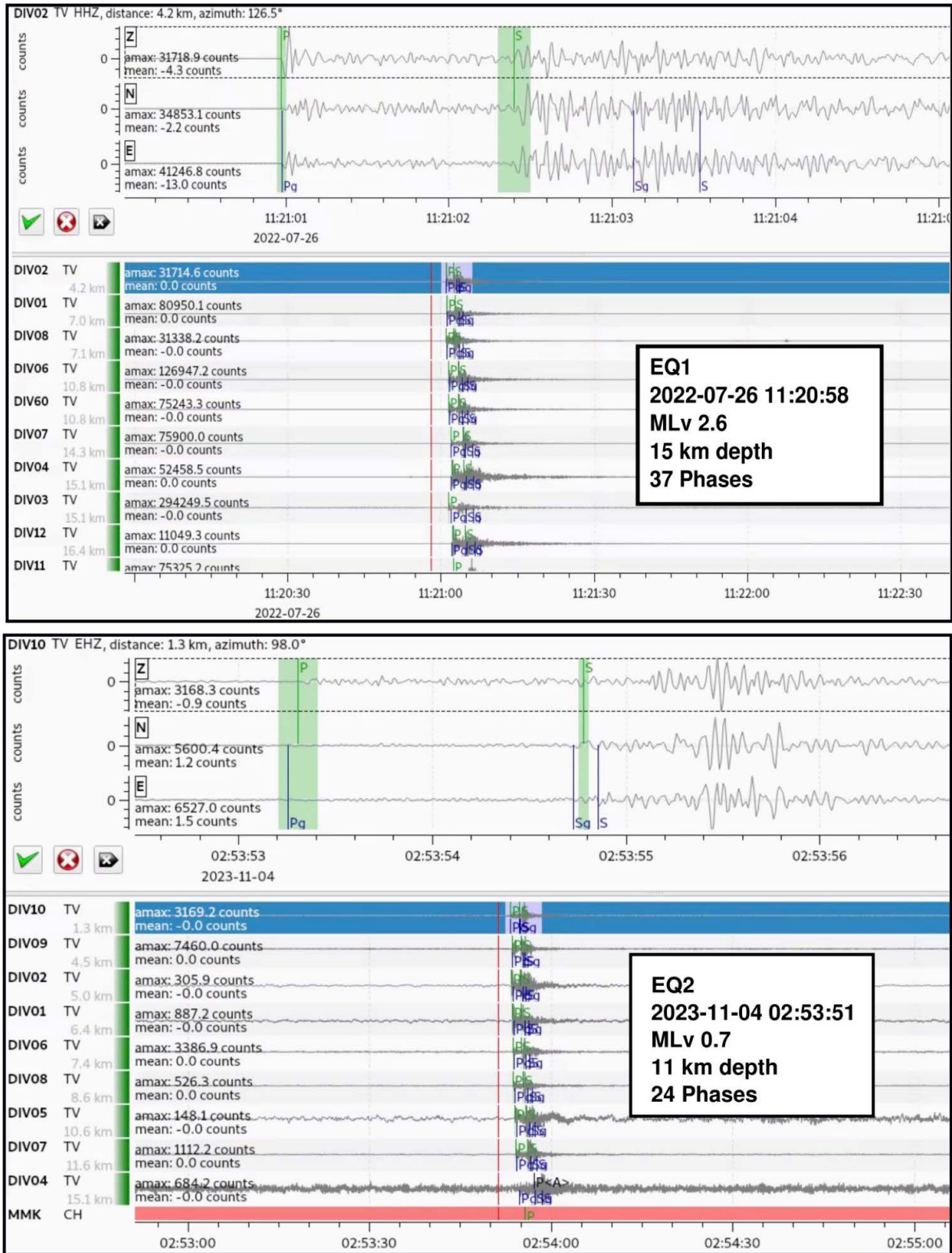


Figure S2. Two example earthquakes evaluated with SeisComp. The top earthquake was the biggest earthquake in close proximity to the boreholes, but did not occur during drilling. The second micro earthquake occurred during the second drilling phase. The locations of these earthquakes are marked on Fig. 9 in the main text.