

SUPPLEMENT TO

ADRIAARRAY IN ALBANIA: COLLABORATIVE DEPLOYMENT, STATION CHARACTERIZATION, AND DATA INTEGRATION

Edmond Dushi¹, Besian Rama¹, Antje Schlömer², Sven Egdorf²,
Marcos Terpoorten²

¹ Institute of Geosciences (IGEO), Department of Seismology, Tirana, Albania

² Ludwig-Maximilians-Universität München, Department of Earth and Environmental Sciences, Munich, Germany

Supplementary material

HVSR plots

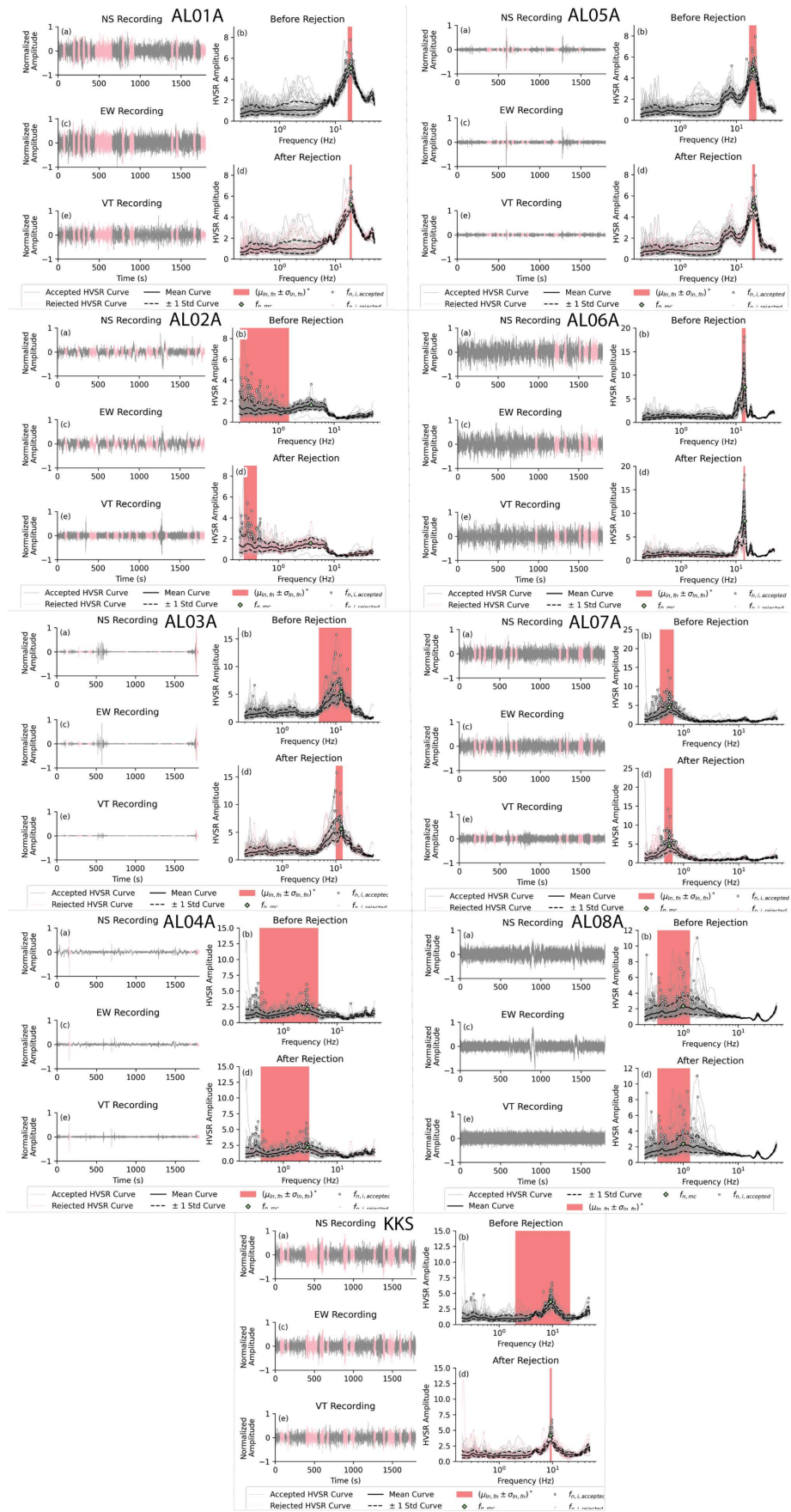
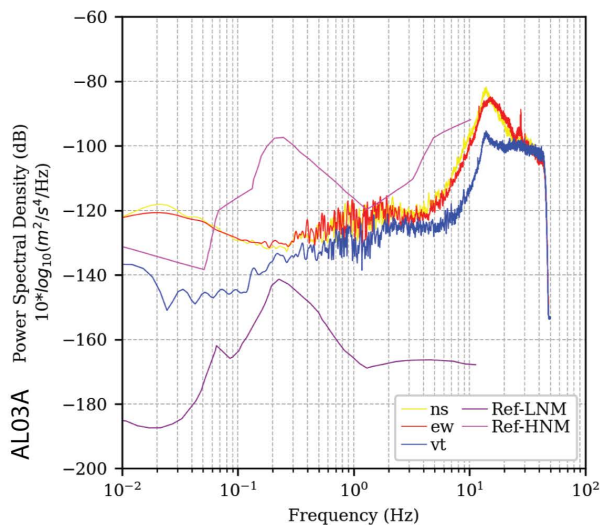
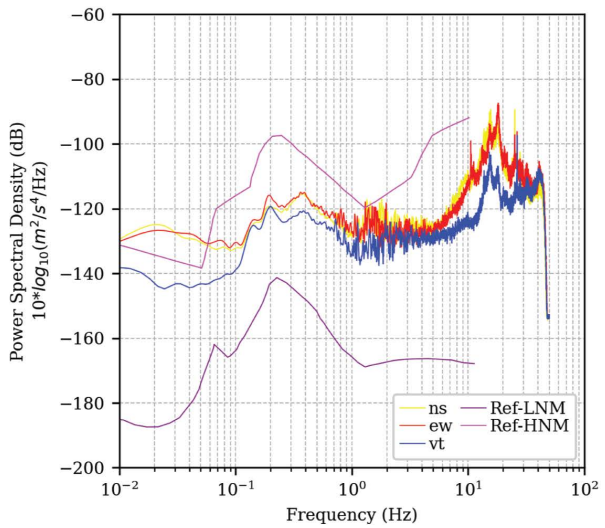
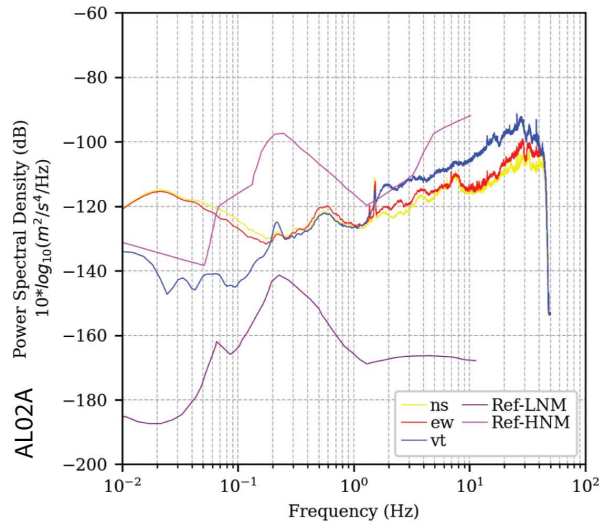
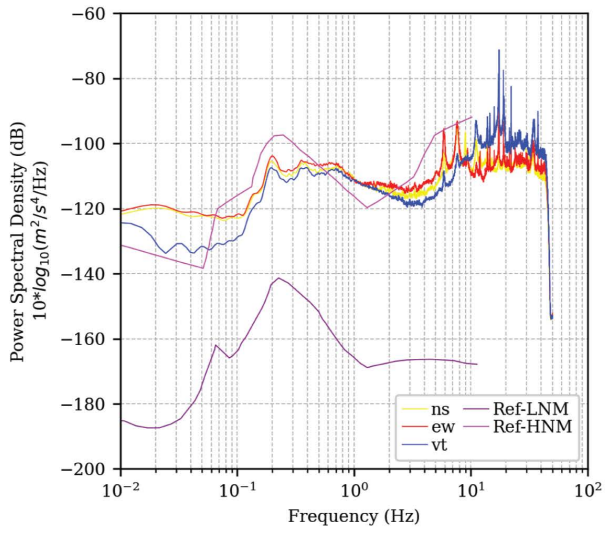
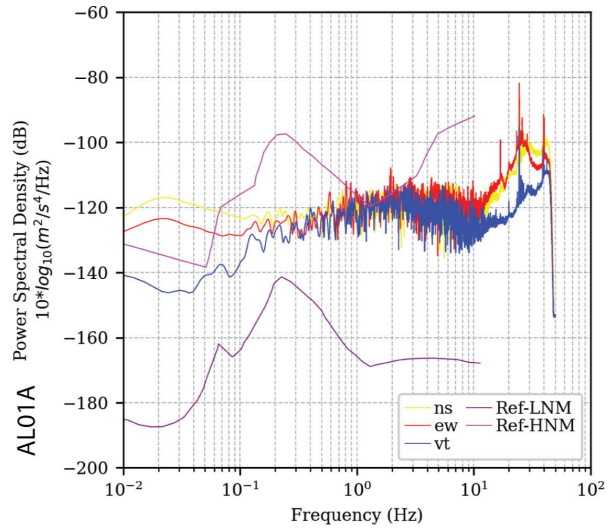
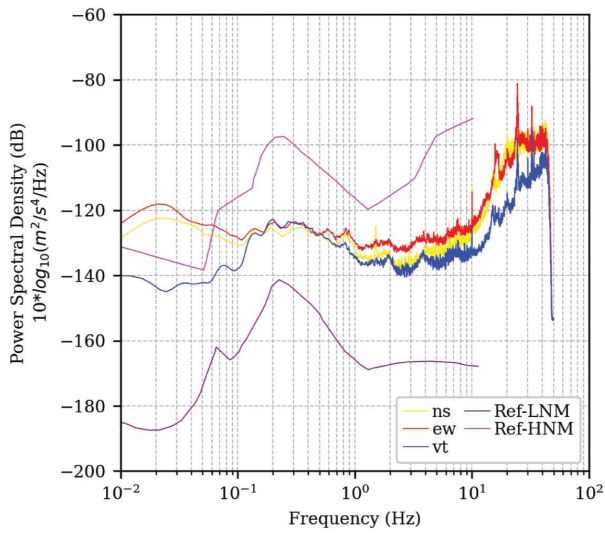
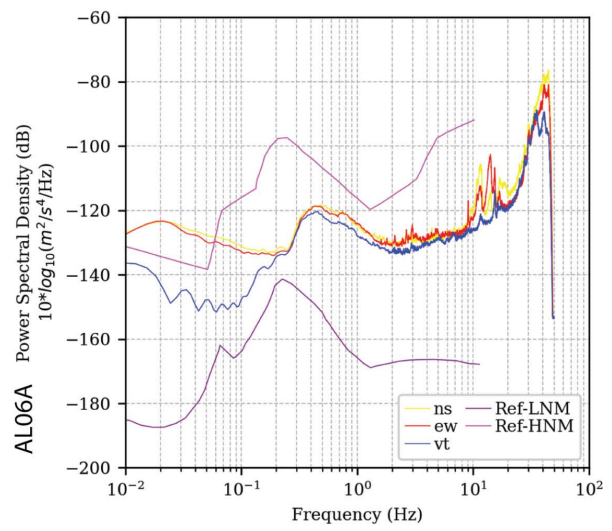
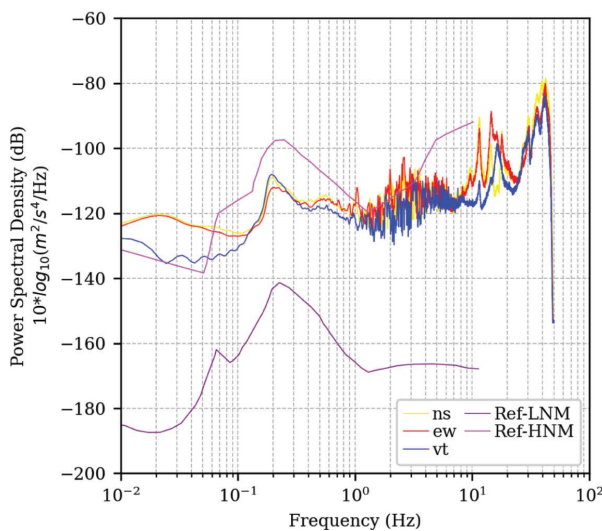
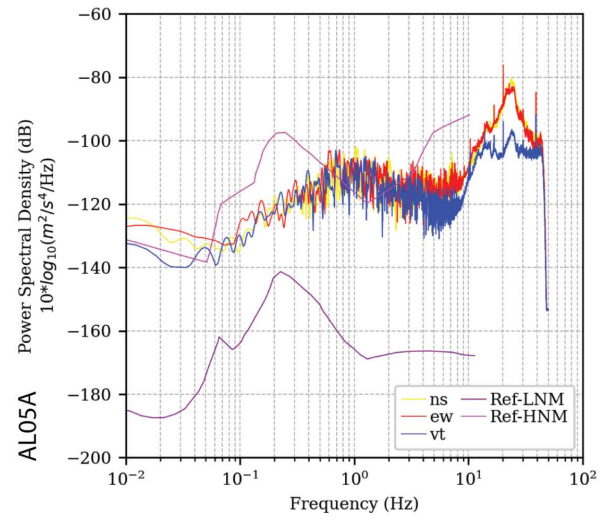
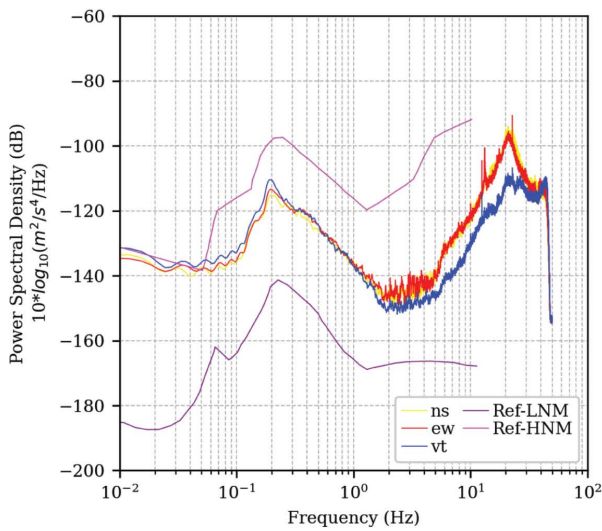
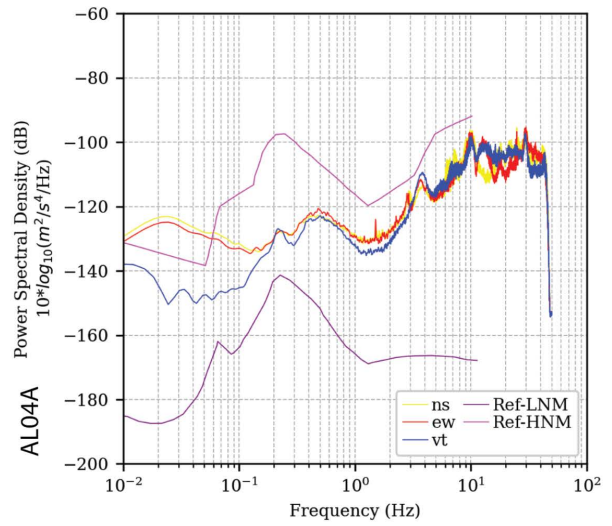
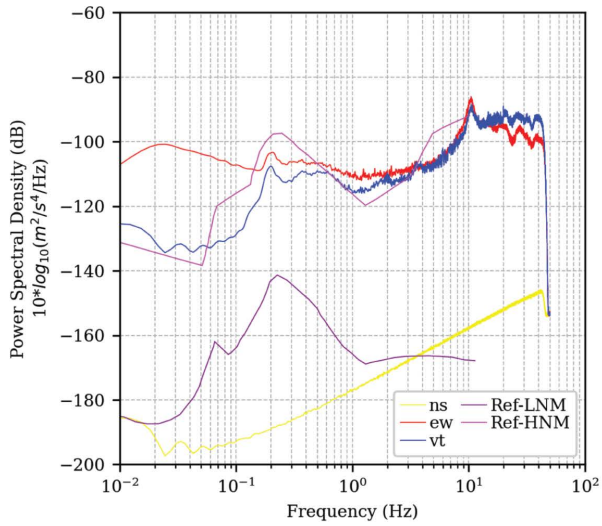


Figure A1. All HVSR curves with the rejection method for all the stations installed in Albania.

PSD plots





AdriaArray Albanian station performance

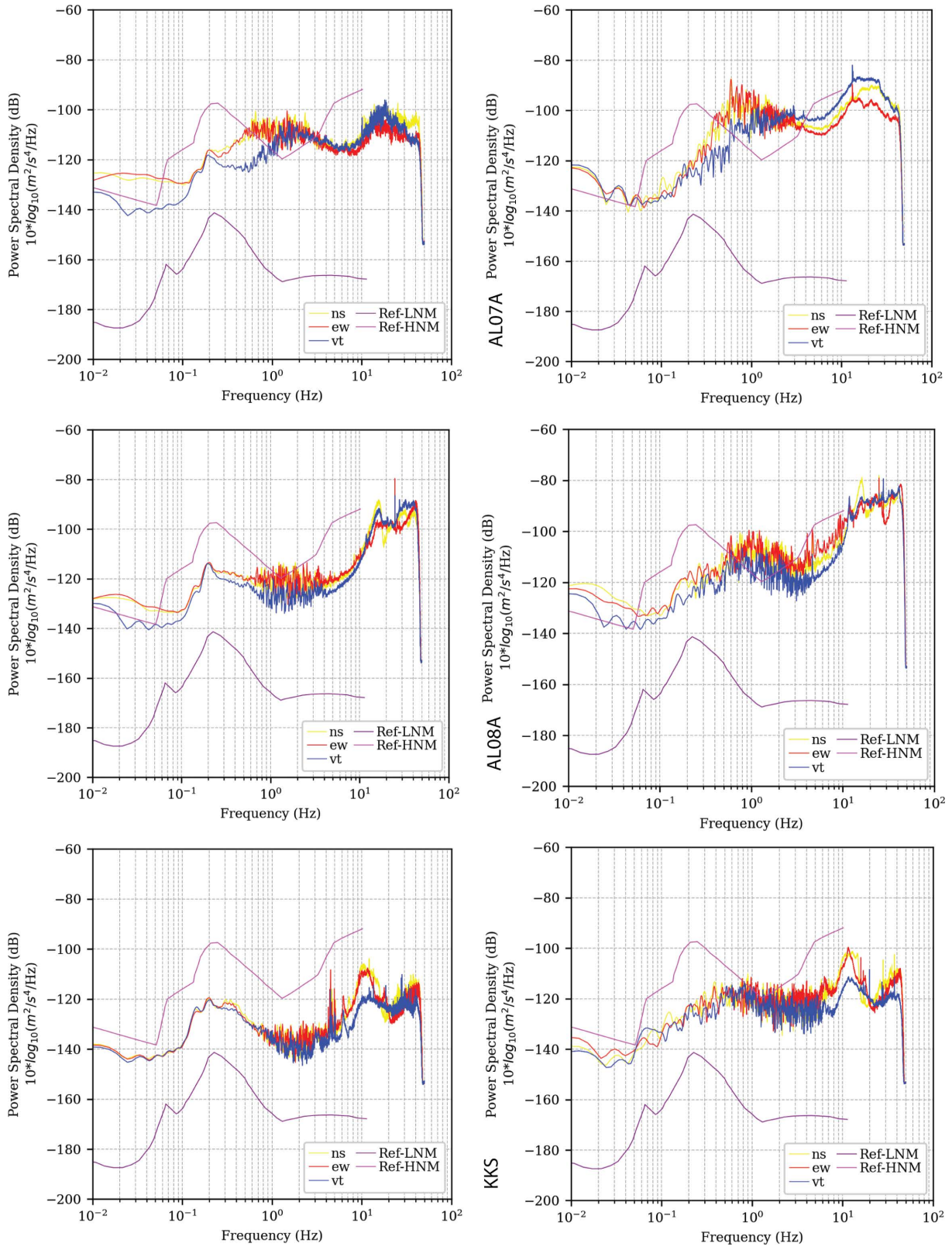


Figure B1. All PSD plots calculated in late Winter and late Summer for all the stations.